



# Enterprise Risk Suite (formerly Adaptiv)

Unlock comprehensive risk management  
for energy and commodities

## The engine for managing market and counterparty credit risk

As regulations and market dynamics continue to evolve, risk managers must track a growing range of risks in ever greater detail. They need to assess the risk on trading decisions and help drive their firm's overall performance – while grappling with a volatile market.

Modern organizations need a robust, future-proof risk solution to support risk managers and traders alike – one that will keep them competitive and compliant, while still being cost effective.

**FIS® Enterprise Risk Suite (formerly Adaptiv)** helps financial institutions manage market and counterparty credit risk and make better risk management decisions. By consolidating, simplifying and optimizing your organization's risk infrastructure, the solution helps advance the way you manage risk and make capital work harder.

Available in the cloud, Enterprise Risk Suite provides the advanced computational resources you need to handle economic complexity, while helping reduce risk infrastructure costs and increase synergies across your risk management team.

Additionally, Enterprise Risk Suite enables compliance with regulatory obligations under FRTB and Basel IV, as well as SA-CCR, SIMM and limit monitoring requirements. It's powerful enough to generate all XVA's, including KVA. XVA sensitivities can be calculated at speed utilizing algorithmic differentiation techniques (AAD). And you can benefit from open-source Kafka technology to gain real-time insights that help drive revenue.

## Comprehensive

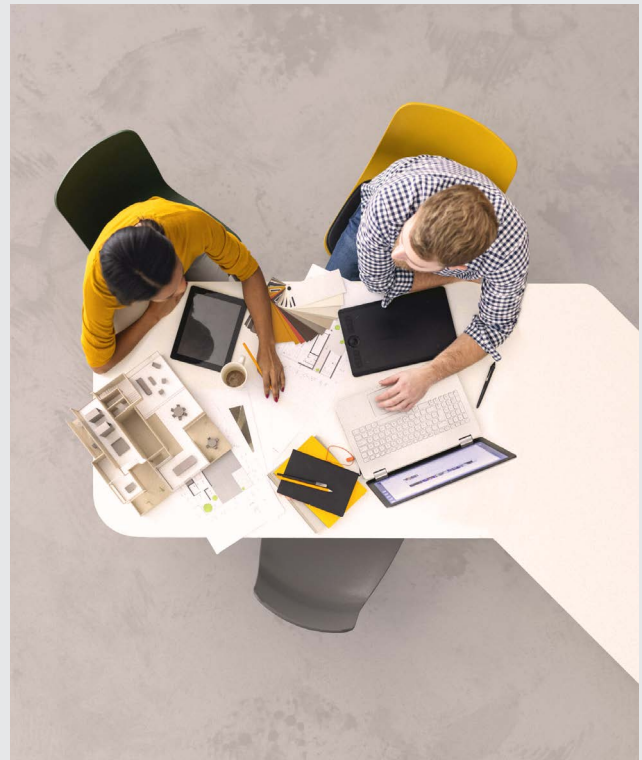
One platform spans your coverage across commodities, energy and structured financial products.

## Market tested

Built to deal with the huge volatility spikes and negative rates of recent years. Construct the curves you need to account for seasonality and other variations.

## Flexible and scalable

Flexible technology stack seamlessly scales to your organization, automating the risk process while reducing manual work.



# Make smart risk decisions

## Comprehensive asset coverage

Enterprise Risk Suite provides extensive instrument coverage for commodities, energy, derivatives, equities, fixed income, structured credit, FX and more, with hundreds of pricing models to ensure precise pricing and risk calculations. An open model library ensures confidence in your results, and new models for public and private assets can be easily written into our analytics suite.

## Accurate risk and portfolio optimization

Optimize your capital and trading decisions with highly accurate VaR calculations. View all the risks within your portfolio together in a highly responsive and flexible HTML5 Risk UI for market and credit risk.

## Deep risk analytics

Fully transparent detailed trade level analytics. More transparency and control of market data, curve construction, and model setup. Comprehensive stress testing, scenario analytics and back testing.

## Flexible deployment

The solution offers versatility with a choice of scalable, on-premise deployment, FIS cloud-hosted, or public cloud solution.

Our containerized, microservice based architecture brings all the benefits of simplified deployment and upgrades, as well as flexible, on-demand compute resources.

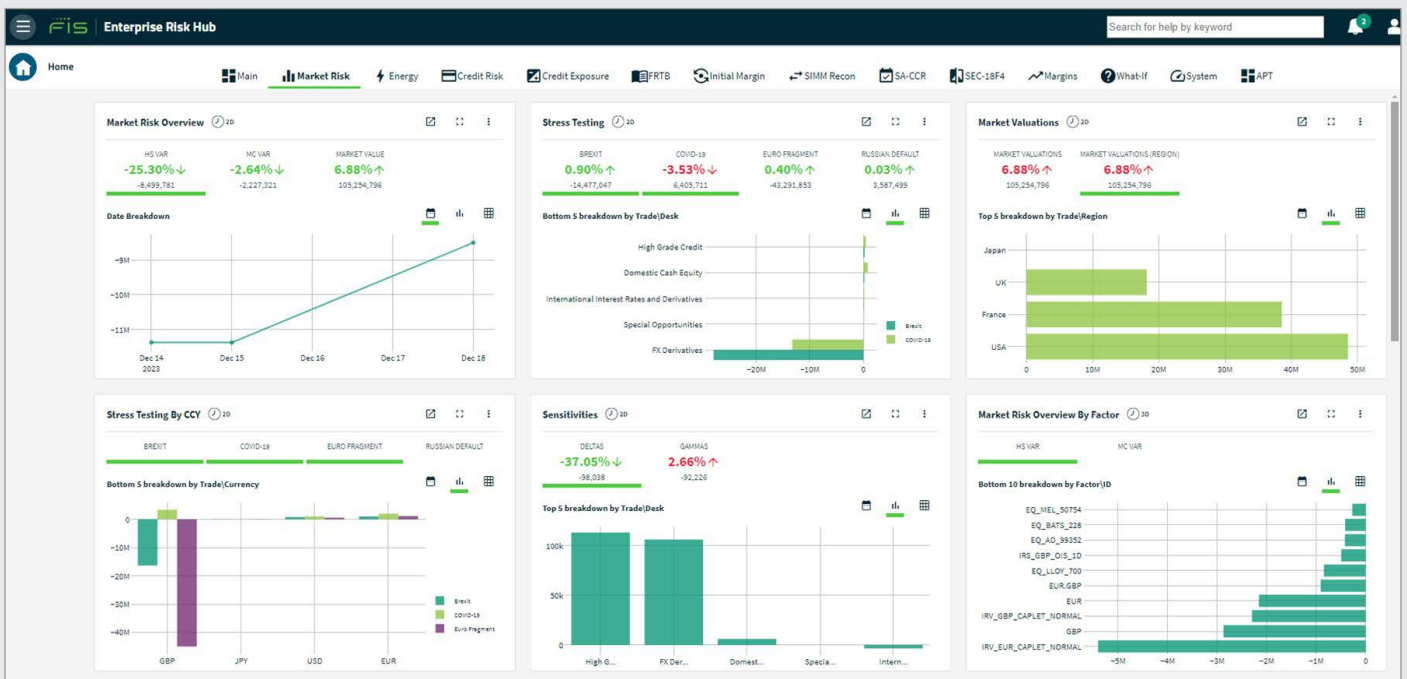
## Automated and performant

Consolidate across any number of trading or source systems and align, standardize and automate your approach across the whole firm.

Our engine is built as a fully scalable solution, both horizontally and vertically, helping reduce hardware costs.

## An industry leader

Enterprise Risk Suite continues to set the standard for excellence in risk technology. Recently, FIS was honored as a Category Leader in the Chartis Credit Risk Management Solutions 2025 and the 2025 Chartis Energy 50. Additionally, Enterprise Risk Suite earned the title of Category Leader in the Chartis Enterprise Market Risk Solutions 2024.



## Learn more

For more information on FIS Enterprise Risk Suite (formerly Adaptiv) energy and commodities, contact your account manager or visit [fisglobal.com/contact-us](https://fisglobal.com/contact-us).



Unlock more



### Money at rest. Money in motion. Money at work.™

Our **technology** powers the global economy across the money lifecycle.



Money at rest

Unlock seamless integration and human-centric digital experiences while ensuring efficiency, stability, and compliance as your business grows.



Money in motion

Unlock liquidity and flow of funds by synchronizing transactions, payment systems, and financial networks without compromising speed or security.



Money at work

Unlock a cohesive financial ecosystem and insights for strategic decisions to expand operations while optimizing performance.

 [fisglobal.com/contact-us](https://fisglobal.com/contact-us)

 [linkedin.com/company/fis](https://linkedin.com/company/fis)

 [x.com/fisglobal](https://x.com/fisglobal)

This material is for information purposes only of the intended recipient. We have taken care in the preparation of this information but will not be responsible for any losses or damages including loss of profits, indirect, special or consequential losses arising as a result of any information in this document or reliance on it (other than in respect of fraud or death or personal injury caused by negligence). Terms and conditions apply to all our services. The content of this material may not be reproduced without prior consent of FIS.